

FIELDALE-RIDGEWAY

TRANSMISSION LINE REBUILD PROJECT



Appalachian Power representatives plan to increase electric reliability in Henry County by updating the local electric transmission system. The Fieldale - Ridgeway Transmission Line Rebuild Project involves upgrading approximately 15 miles of transmission line. Company representatives filed an application with the Virginia State Corporation Commission in fall 2021 and received approval on July 22, 2022. Construction began in summer 2025 and is expected to conclude in late 2026.



WHAT

This project involves rebuilding approximately 15 miles of 138-kilovolt transmission line in or near existing right-of-way.

WHY

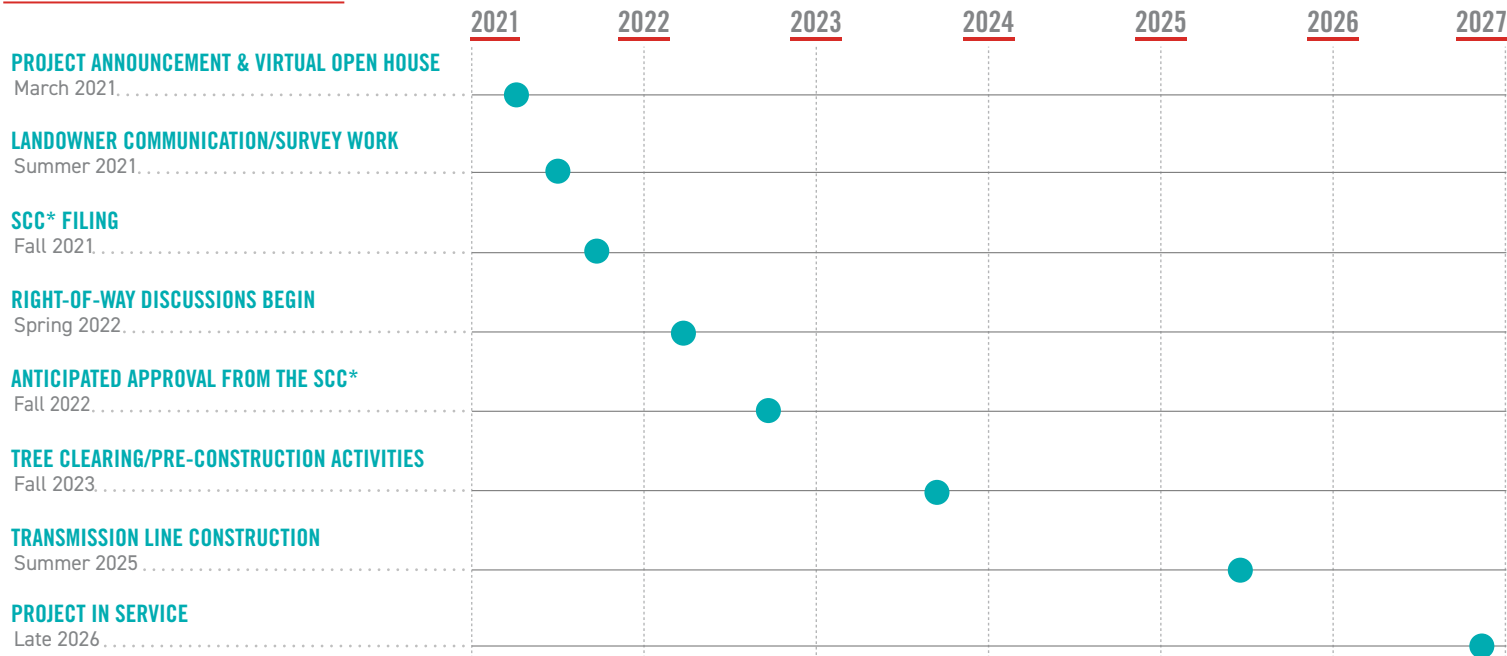
- The improvements:
- Upgrade equipment that caused multiple service interruptions in the last few years for customers served by Appalachian Power’s Sheffield and Ridgeway substations.
 - Replace deteriorating 1940s wooden poles with steel poles.
 - Increase electric reliability in the area.

WHERE

The existing transmission line begins at the Fieldale Substation along Appalachian Drive and exits the substation to the east. The line continues south, crosses Route 220 at two separate points and travels through Sheffield Substation off Joseph Martin Highway. The upgrades travel through Ridgeway Substation on Old Mill Road and conclude at a pole near the Virginia-North Carolina border.



PROJECT SCHEDULE



*SCC: Virginia State Corporation Commission.

**Timeline subject to change.

TYPICAL STRUCTURES

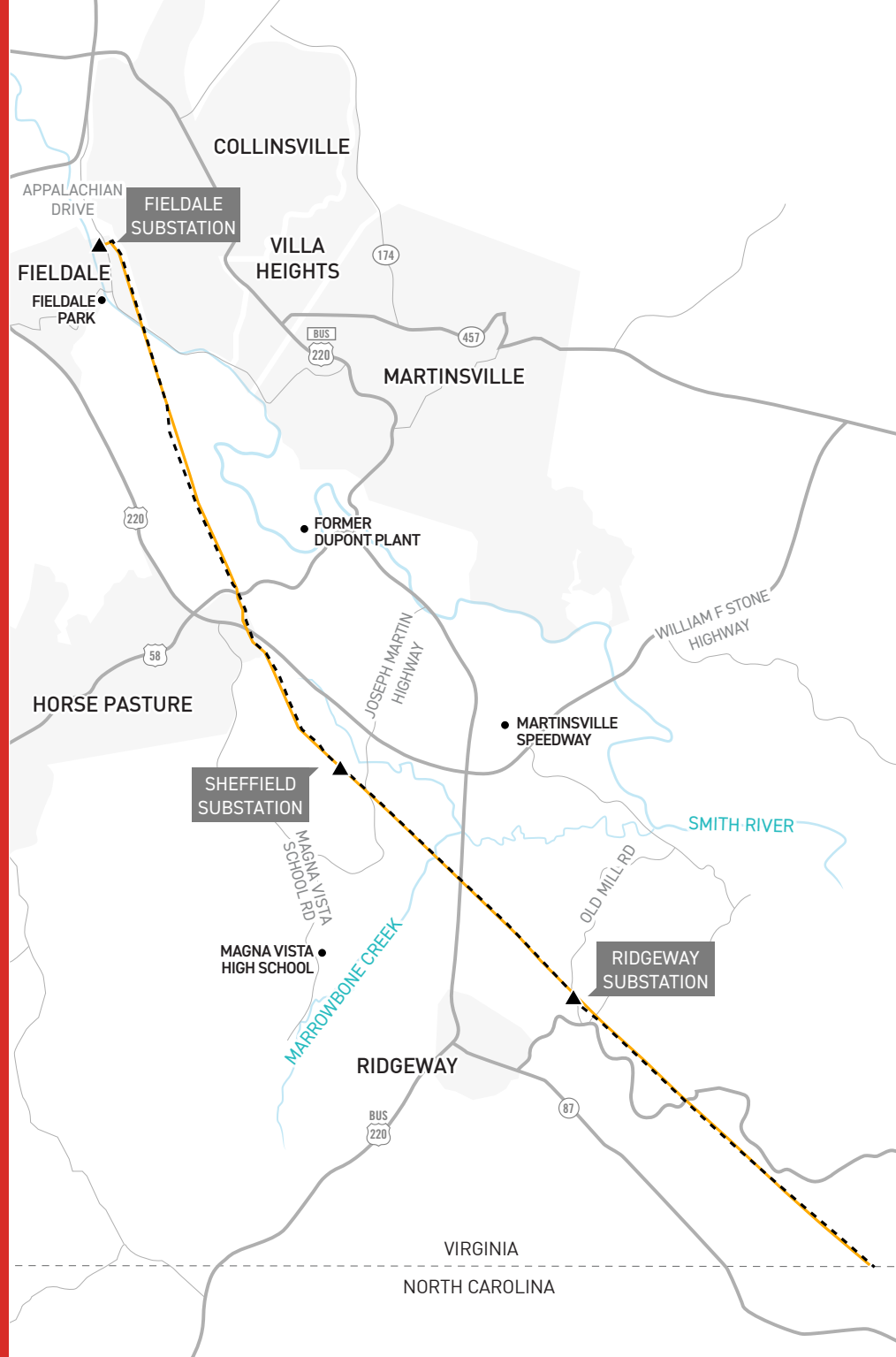
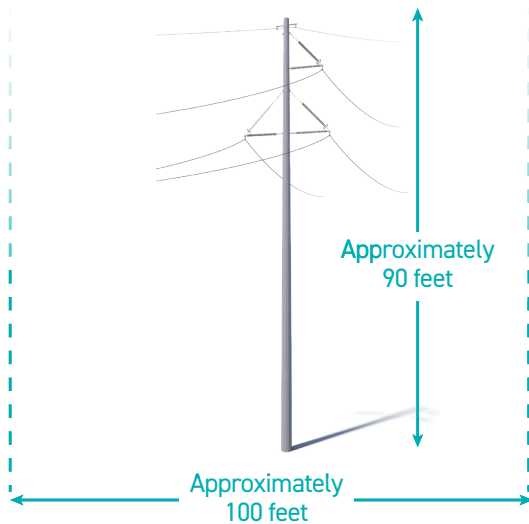
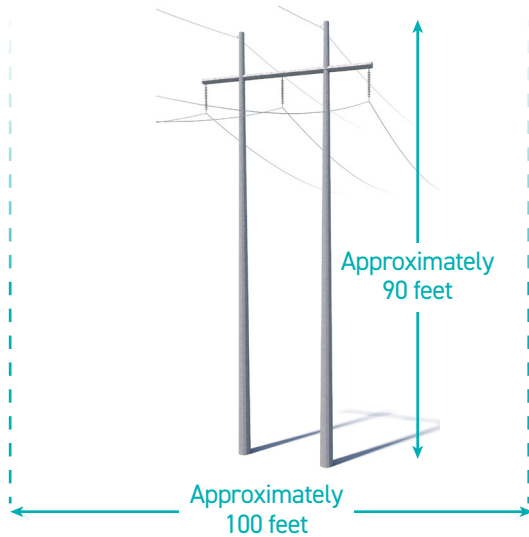
Crews plan to rebuild the power line using primarily steel H-frame poles and single poles depending on the location.

Structure Height: **Approximately 90 feet***

Right-of-Way Width: **Approximately 100 feet***

At Appalachian Power, we are committed to meeting the energy needs of customers while protecting the environment and natural beauty of the region.

*Exact structure, height and right-of-way requirements may vary



FIELDALE-RIDGEWAY TRANSMISSION LINE REBUILD PROJECT

— EXISTING TRANSMISSION LINE TO BE REBUILT
(IN OR NEAR EXISTING RIGHT-OF-WAY)

▲ SUBSTATION

*VISIT APPALACHIANPOWER.COM/FIELDALE-RIDGEWAY TO VIEW AN INTERACTIVE MAP



APPALACHIAN POWER VALUES YOUR INPUT ABOUT THIS PROJECT. PLEASE SEND COMMENTS AND QUESTIONS TO:

FORD CARSON

Project Outreach Specialist

540-355-8868

Apco_Outreach@aep.com

AppalachianPower.com/Fieldale-Ridgeway



08/22/2025